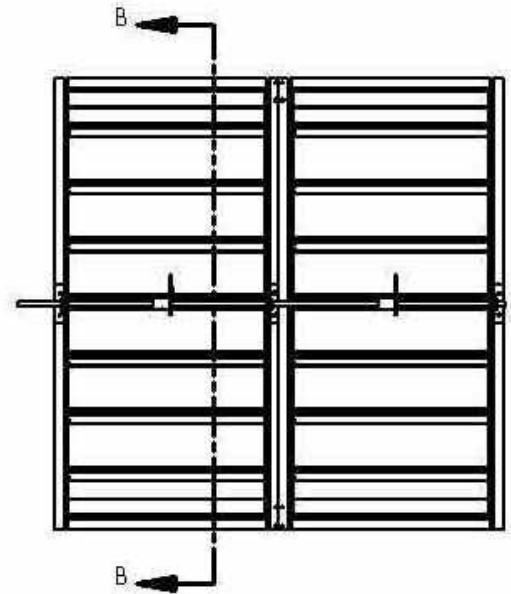


STANDARD CONSTRUCTION

Frame: 8" x 2" x 1/4" (203 x 51 x 6.35 mm) epoxy coated plate steel channel.
Blades: Approx. 10" (254 mm) deep on 9" (229 mm) centers, 1/4" (6.35 mm) thick epoxy coated plate steel vee-blade. Parallel action standard.
Blade Seals: EPDM rubber.
Jamb Seals: Stainless Steel compression type.
Bearings: External bolt-on ball bearing type.
Axles: 3/4" (19) diameter plated steel.
Linkage: Heavy duty side linkage, out of airstream.
Minimum Size: Single blade 10"w x 12"h (254 x 305 mm).
 Multiple blade 10"w x 22" (254 x 559 mm).
Maximum Size: 48"w x 72"h (1219 x 1829 mm) single panel. Contact factory for multiple section units.
Maximum Temperature: 250° F (121 C).
Maximum System Pressure: 48" wide blade: 28 in. w.g. (7 kPa).
 12" wide blade: 45 in. w.g. (11 kPa).
Maximum System Velocity: 4500 fpm (22.9 m/s).
Leakage: Does not exceed 10 CFM/ft² (34 L/s/m²) against 4 in. w.g (1 kPa) differential static pressure at 40° F.

AVAILABLE OPTIONS

- Non-standard flange width or frame depth
- Outboard bearings with seal
- Silicone blade seals
- Heavy duty hand locking quadrants
- Bolt holes in flanges
- Heavy Duty Jackshaft



REF. #	QTY.	WIDTH I.D. (EXACT SIZE)	HEIGHT I.D. (EXACT SIZE)	FRAME/ FLANGE	PB/OB	OPTIONS

PROJECT NAME:

ENGINEER:

CONTRACTOR:

SUBMITTAL DATE: