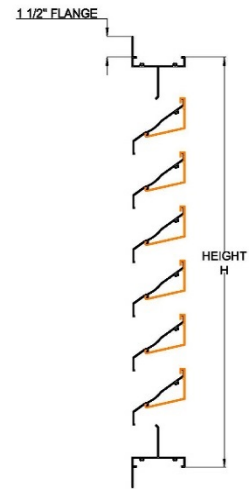
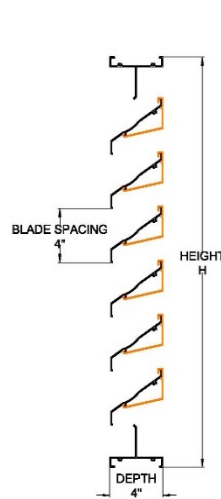
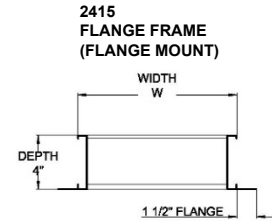
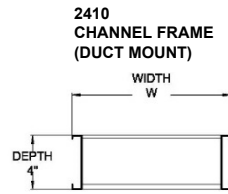
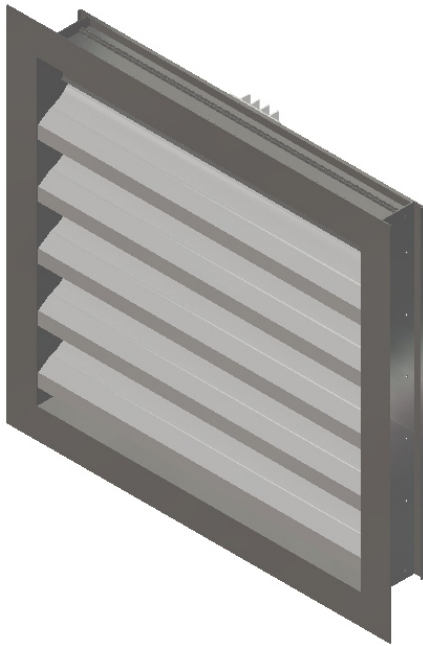




MODEL 2410A / 2415A
HIGH PERFORMANCE 4" DEEP ARCHITECTURAL LOUVER



PERFORMANCE			
LOUVER UNIT SIZE	TOTAL AREA	FREE AREA	FREE AREA
48" x 48"	16 ft ²	8.92 ft ²	55.8 %
(1219 x 1219 mm)	(1.49 m ²)	(0.83 m ²)	
BEGINNING POINT OF WATER PENETRATION AT 0.01 oz./ft ² FREE AREA:			809 FPM

STANDARD CONSTRUCTION

DEPTH:	4" (102 mm)
MATERIAL:	EXTRUDED ALUMINUM - 6063-T5 ALLOY
FRAME THICKNESS:	0.081" (2.06 mm)
BLADE THICKNESS:	0.081" (2.06 mm)
BLADE ANGLE:	37°
BLADE CENTRES:	4" (102 mm)
BIRDSCREEN:	19 GA. GALVANIZED BIRDSCREEN - 1/2" x 1/2" OPENINGS
FINISH:	MILL

SIZE LIMITATIONS: SINGLE SECTION LOUVER

	MINIMUM	MAXIMUM
WIDTH	12" (305 mm)	72" (1829 mm)
HEIGHT	12" (305 mm)	120" (3048 mm)
AREA	1 ft ² (0.09 m ²)	60 ft ² (5.57 m ²)

*LOUVER WILL BE MANUFACTURED 1/4" (6.4 mm) SMALLER (SINGLE SECTION) AND 1/2" (12.7 mm) SMALLER (MULTIPLE SECTION) THAN GIVEN OPENING DIMENSIONS UNLESS OTHERWISE SPECIFIED

AVAILABLE ACCESSORIES

<p>FINISH:</p> <ul style="list-style-type: none"> POWDER COAT FINISH DURANAR FINISH ANODIZED FINISH <ul style="list-style-type: none"> CLEAR ANODIZED LIGHT BRONZE MEDIUM BRONZE DARK BRONZE BLACK ANODIZED EXTENDED SILLS SECURITY BARS FILTER RACKS STAINLESS STEEL FASTENERS HINGED ACCESS DOORS ALL WELDED CONSTRUCTION CUSTOM GEOMETRIC SHAPES CONTINUOUS LINE CONSTRUCTION WITH HIDDEN MULLIONS TO PROVIDE AN UNINTERRUPTED APPEARANCE 	<p>SCREENS:</p> <ul style="list-style-type: none"> BIRDSCREEN <ul style="list-style-type: none"> 1/2" x 1/2" INTER CRIMPED ALUMINUM ALUMINUM BIRDSCREEN WITH FRAME INSECT SCREEN <ul style="list-style-type: none"> 18 x 14 MESH 	<p>BLANK-OFF PANELS (ALUMINUM): VARIOUS GAUGES</p> <ul style="list-style-type: none"> NON-INSULATED BLANK-OFF PANELS INSULATED BLANK-OFF PANELS <ul style="list-style-type: none"> 1" (25.4 mm) INSULATION 2" (50.8 mm) INSULATION
--	--	--

DWG. 2410 / 2415 MARCH 2016



MODEL 2410A / 2415A
HIGH PERFORMANCE 4" DEEP ARCHITECTURAL LOUVER

FREE AREA (Sq. Ft.)

		WIDTH (INCHES)															
		12	16	20	24	28	32	36	40	44	48	52	56	60	64	68	72
12	0.29	0.39	0.50	0.61	0.72	0.83	0.94	1.05	1.16	1.26	1.37	1.48	1.59	1.70	1.81	1.92	
16	0.49	0.67	0.86	1.04	1.23	1.41	1.60	1.78	1.97	2.15	2.34	2.52	2.71	2.89	3.08	3.26	
20	0.68	0.93	1.19	1.45	1.70	1.96	2.22	2.48	2.73	2.99	3.25	3.50	3.76	4.02	4.28	4.53	
24	0.88	1.20	1.54	1.87	2.20	2.53	2.87	3.20	3.53	3.86	4.20	4.53	4.86	5.19	5.53	5.86	
28	1.05	1.44	1.84	2.24	2.63	3.03	3.43	3.82	4.22	4.62	5.02	5.41	5.81	6.21	6.61	7.00	
32	1.25	1.71	2.19	2.66	3.13	3.60	4.08	4.55	5.02	5.49	5.97	6.44	6.91	7.38	7.86	8.33	
36	1.44	1.99	2.53	3.08	3.63	4.18	4.72	5.27	5.82	6.37	6.91	7.46	8.01	8.56	9.10	9.65	
40	1.63	2.24	2.86	3.48	4.10	4.72	5.34	5.95	6.57	7.19	7.81	8.43	9.05	9.67	10.28	10.90	
44	1.83	2.52	3.21	3.91	4.60	5.30	5.99	6.69	7.38	8.08	8.77	9.47	10.16	10.86	11.55	12.25	
48	2.02	2.78	3.55	4.31	5.08	5.85	6.62	7.38	8.15	8.92	9.68	10.45	11.22	11.98	12.75	13.52	
52	2.22	3.05	3.90	4.74	5.58	6.42	7.26	8.11	8.95	9.79	10.63	11.47	12.32	13.16	14.00	14.84	
56	2.39	3.29	4.20	5.10	6.01	6.92	7.82	8.73	9.64	10.55	11.45	12.36	13.27	14.18	15.08	15.99	
60	2.59	3.56	4.54	5.53	6.51	7.49	8.47	9.45	10.44	11.42	12.40	13.38	14.37	15.35	16.33	17.31	
64	2.79	3.83	4.89	5.95	7.01	8.06	9.12	10.18	11.24	12.29	13.35	14.41	15.46	16.52	17.58	18.64	
68	2.97	4.09	5.22	6.35	7.48	8.60	9.73	10.86	11.99	13.12	14.25	15.38	16.50	17.63	18.76	19.89	
72	3.17	4.36	5.56	6.76	7.96	9.16	10.36	11.57	12.77	13.97	15.17	16.37	17.57	18.77	19.98	21.18	
76	3.31	4.55	5.81	7.06	8.32	9.58	10.83	12.09	13.34	14.60	15.86	17.11	18.37	19.62	20.88	22.14	
80	3.48	4.78	6.10	7.42	8.74	10.06	11.38	12.70	14.02	15.34	16.66	17.98	19.30	20.62	21.94	23.26	
84	3.81	5.25	6.69	8.14	9.59	11.03	12.48	13.93	15.38	16.82	18.27	19.72	21.16	22.61	24.06	25.51	
88	3.98	5.48	6.99	8.50	10.01	11.52	13.03	14.54	16.05	17.56	19.07	20.59	22.10	23.61	25.12	26.63	
92	4.15	5.71	7.28	8.86	10.43	12.01	13.58	15.16	16.73	18.30	19.88	21.45	23.03	24.60	26.18	27.75	
96	4.32	5.94	7.58	9.22	10.85	12.49	14.13	15.77	17.41	19.05	20.68	22.32	23.96	25.60	27.24	28.88	
100	4.49	6.17	7.87	9.57	11.28	12.98	14.68	16.38	18.08	19.79	21.49	23.19	24.89	26.59	28.30	30.00	
104	4.65	6.40	8.17	9.93	11.70	13.46	15.23	17.00	18.76	20.53	22.29	24.06	25.82	27.59	29.36	31.12	
108	4.82	6.63	8.46	10.29	12.12	13.95	15.78	17.61	19.44	21.27	23.10	24.93	26.76	28.59	30.42	32.25	
112	5.16	7.09	9.05	11.01	12.97	14.92	16.88	18.84	20.79	22.75	24.71	26.66	28.62	30.58	32.54	34.49	
116	5.33	7.33	9.35	11.37	13.39	15.41	17.43	19.45	21.47	23.49	25.51	27.53	29.55	31.57	33.59	35.62	
120	5.49	7.56	9.64	11.73	13.81	15.89	17.98	20.06	22.15	24.23	26.32	28.40	30.49	32.57	34.65	36.74	

RECOMMENDED SPECIFICATION

Furnish and install stationary louver model 2410 / 2415 as manufactured by Ventex Inc, Alliston, Ontario. Louvers must be tested in accordance with AMCA 500-L. Louvers shall be 4" (102 mm) deep. Blades shall be 0.081" (2.06 mm) extruded 6063-T5 aluminum alloy and frame shall be 0.081" (2.06 mm) extruded 6063-T5 aluminum alloy. Louvers shall have 19 gauge galvanized 1/2" x 1/2" bird screen. All materials shall be factory finished after assembly with Polyester Powder Coat in a colour selected from the Ventex Colour Chart.

PRESSURE DROP- 2410 / 2415

FIGURE 5.5, TEST SIZE 48" x 48"

